



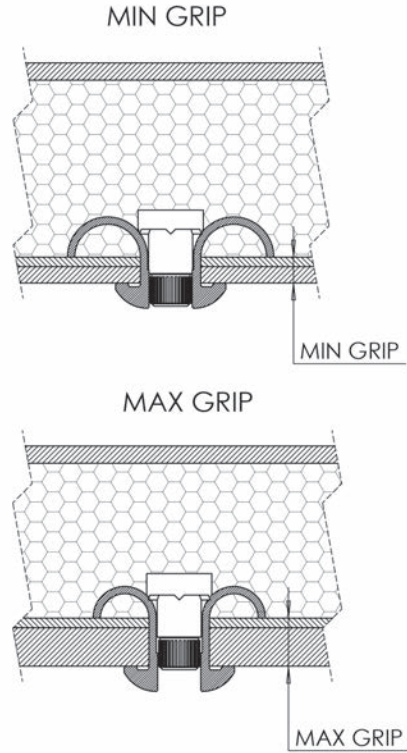
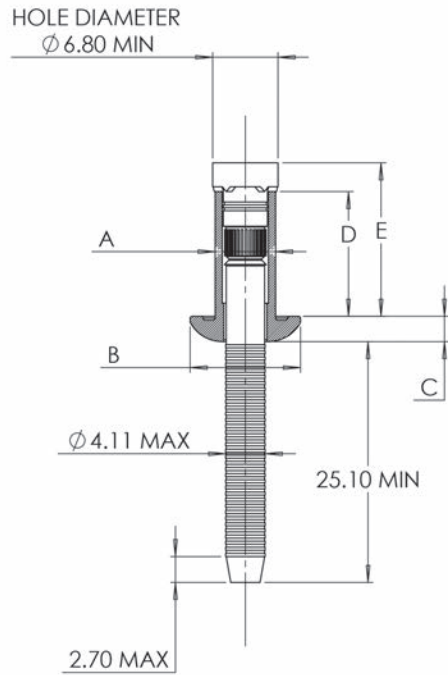
The Huck Product Range<sup>©</sup>

Penta-Lok<sup>™</sup>

### Penta-Lok<sup>™</sup> Key Features

- Specially designed for joining lightweight panels to steel, stainless steel and aluminium extrusion.
- No through hole required in the lightweight panel. Penta-Lok only needs a minimum 8mm of depth in the lightweight panel to insert the blind side of the fastener into prior to installation to be able to install correctly.
- Ideally suited for joining load restrain profiles to lightweight panel. Small centre to edge distance of the head of the Penta-Lok enables installation in applications with limited space.
- High pull-out strength. Due the load spread of the “claws” inside the lightweight panel of approximately 16mm.
- Penta-Lok “claws” unfurl and install inside the actual panel not on the blind side/back of panel.
- Can be installed into Ecofont\*, Polyfont PW\*, Carbofont\*, Isofont\*, Plastifont\*, Nidafont L\*, Scuffliner\*, Floor\*, Honeycomb, Aluminium, Multi-composite boards and many other plastics / composite panels (\* Registered trademark of Polyfont).
- Structural fastener
- Head style: Protruding
- Materials: Steel

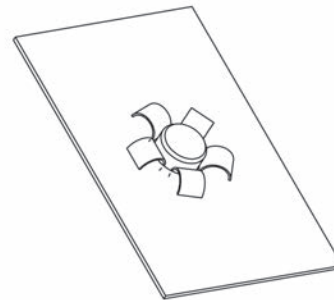




IDENTIFICATION ON SLEEVE HEAD



GRIP NUMBER / GRIP LENGTH



Specifications								
Diameter	Steel Part Number	Grip Range (mm)	Hole Size	A	B	C	D	E
6.4mm (1/4")	PLP-R8-P3	3.0 - 5.0	6.8 - 7.0	6.3 - 6.68	11.5 - 12.5	2.64 - 3.3	12.00	16.50
6.4mm (1/4")	PLP-R8-P5*	5.0 - 7.0	6.8 - 7.0	6.3 - 6.68	11.5 - 12.5	2.64 - 3.3	14.00	18.50
6.4mm (1/4")	PLP-R8-P7*	7.0 - 9.0	6.8 - 7.0	6.3 - 6.68	11.5 - 12.5	2.64 - 3.3	16.00	20.50
6.4mm (1/4")	PLP-R8-P9*	9.0 - 11.0	6.8 - 7.0	6.3 - 6.68	11.5 - 12.5	2.64 - 3.3	18.00	22.50
6.4mm (1/4")	PLP-R8-P11*	11.0 - 13.0	6.8 - 7.0	6.3 - 6.68	11.5 - 12.5	2.64 - 3.3	20.00	24.50

\*Non stocked items, available on request

### High pull out strength

Due the load spread of the “claws” inside the lightweight panel of approximately 16mm.



### Penta-Lok “claws” unfurl and install inside

the actual panel not on the blind side/back of panel.

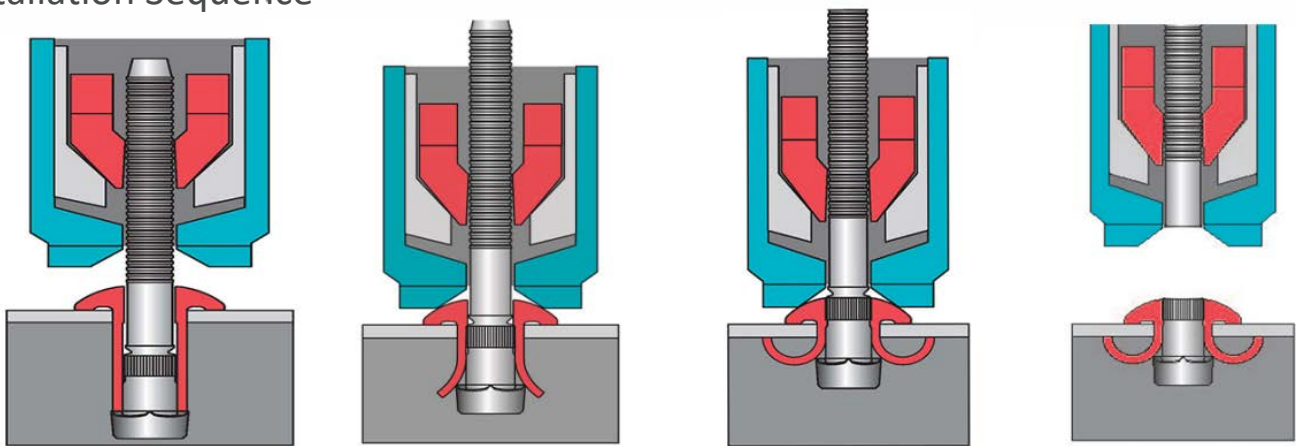


SFR 155 Issue 2

Mechanical properties		
FEATURE	IMPERIAL	METRIC
TENSILE MIN	1600 Lbf	7.12 KN
SHEAR MIN	2600 Lbf	11.56 KN
PIN RETENTION MIN	200 Lbf	0.89 KN
SLEEVE COATING	ZINC ELECTROPLATE	ZINC ELECTROPLATE
PIN COATING	ZINC ELECTROPLATE	ZINC ELECTROPLATE

Grip lengths (mm)			
	MIN GRIP	MAX GRIP	SLEEVE LENGTHS
PLP-R8-GRIP P3	3.0	5.0	12.0
PLP-R8-GRIP P5	5.0	7.0	14.0
PLP-R8-GRIP P7	7.0	9.0	16.0
PLP-R8-GRIP P9	9.00	11.00	18.00
PLP-R8-GRIP P11	11.00	13.00	20.0

## Installation Sequence

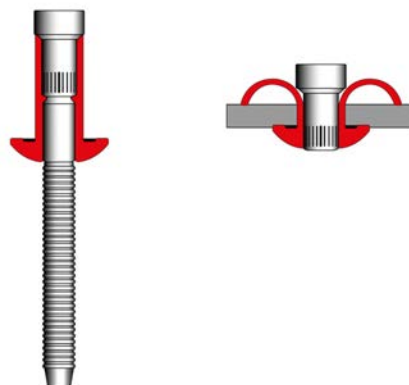


1. Pin placed through extrusion's prepared hole. With the blind side of the Penta-Lok placed a minimum of 8mm into the lightweight panel. Tool is placed over the fastener pintail.

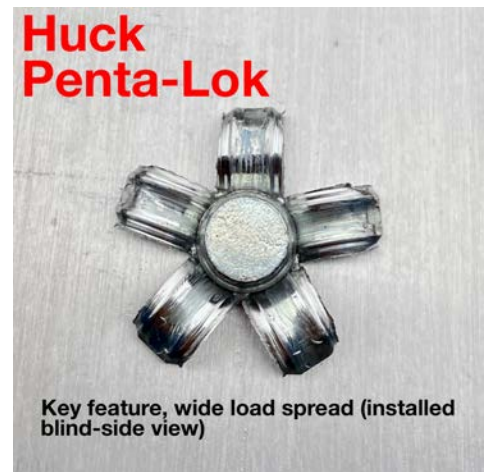
2. Tool activated, deforming the blind side begins with the Penta-Lok 'claws' beginning to unfurl inside the lightweight panel.

3. Joint tightened, 'claws' fully opened inside lightweight panel.

4. Pintail breaks, installation complete.



Cross section



Disclaimer: The product information contained in this publication is only for general guidance with regard to properties of the products shown and/or the means for selecting such products, and is not intended to create any warranty, express, implied, or statutory; all warranties are contained only in Star Fasteners (UK) Ltd's written quotations, acknowledgments, and/or purchase orders. It is recommended that the user secure specific, up-to-date data and information regarding each application and/or use of such products.

SFR 155 Issue 2