



* Various Collars Available

The Huck
Product Range[®]

Hucktainer[®] with Foam Seal

Hucktainer[®] Key Features

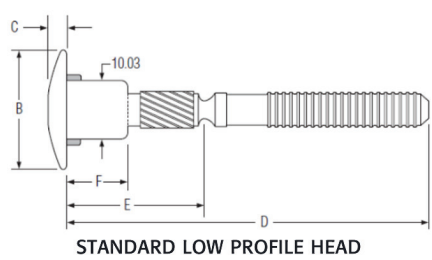
- Designed specifically for joining composite board in trailer applications
- Will not crush or damage the composite board
- Additional clamp restrictor shims available for use with very soft panels
- Integral foam seal around pin head prevents moisture ingress - exclusively from Star Fasteners
- Low profile on both sides when installed: No catching on clothes, skin or goods
- Standard low profile head style showing grip number
- Various Collar (sleeve) styles: Wide bearing, flat, medium bearing, clearance and countersunk
- Materials: Steel

Also available in:-

- Powder coated - colour matched to customers requirements *special order
- Plastic encapsulated - colour matched to customers requirements *special order - see additional data sheet



HUCKTAINER - Grip ranges for Raised Collars



Grip Number



Identification
Raised or indented Huck mark
and grip number located as shown

Head Dimensions	
B Max	C Max
21.2	3.4

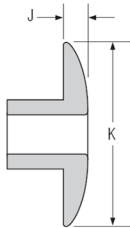
English	Français	Deutsch
Standard low profile head - Steel	Profil plat standard - Acier	Standard niedriges Profil - Stahl
Collar - Wide bearing sleeve	Bague - Douille standard large	Bund - Breite Lagerhülse
Pin: Steel, Zinc Plated, Clear Passivated	Tige: Acier doux, Zingué, passivation transparente	Stift: Niedrig gekohlter Stahl, Zinkblech, blankes passivieren
Collar: Steel, Zinc Plated, Clear Passivated	Bague: Acier doux, Zingué, passivation transparente	Bund: Niedrig gekohlter Stahl, Zinkblech, blankes passivieren

Grip range and Length table / Plages de serrages et longueurs /Tabelle zur Klemm- und Gesamtlänge

Minimum Grip	Maximum Grip	D Max	E Max	F Nom.	Pin Part Number
10.3	14.3	54.6	13.1	0.5	HLPPFS-R12-8
12.7	15.9	55.12	14.27	1.8	HLPPFS-R12-9
14.3	17.5	58.5	16.0	3.2	HLPPFS-R12-10
15.9	19.05	60.1	17.6	4.0	HLPPFS-R12-11
17.5	20.6	61.7	19.2	5.6	HLPPFS-R12-12
19.0	22.2	63.2	20.8	6.7	HLPPFS-R12-13
20.6	23.8	64.8	22.4	8.8	HLPPFS-R12-14
22.2	25.4	66.4	24.0	10.4	HLPPFS-R12-15
23.8	27.0	68.0	25.5	11.9	HLPPFS-R12-16
25.4	28.6	69.6	27.1	13.5	HLPPFS-R12-17
27.0	30.2	71.2	28.7	15.1	HLPPFS-R12-18
28.6	31.8	72.8	30.3	16.7	HLPPFS-R12-19
30.2	33.3	74.4	31.9	18.3	HLPPFS-R12-20
31.7	34.9	75.9	33.5	19.9	HLPPFS-R12-21
33.3	36.5	77.5	35.1	19.9	HLPPFS-R12-22
34.9	38.1	79.1	36.7	19.9	HLPPFS-R12-23
36.5	39.7	80.7	38.2	19.9	HLPPFS-R12-24
38.1	41.3	82.3	39.8	19.9	HLPPLS-R12-25
39.7	42.9	83.9	41.4	19.9	HLPPLS-R12-26
41.8	44.5	85.5	43	19.9	HLPPLS-R12-27
42.9	46.0	87.1	44.6	19.9	HLPPLS-R12-28
44.5	47.6	88.6	46.2	19.9	HLPPLS-R12-29
46.0	49.2	90.2	47.8	19.9	HLPPLS-R12-30

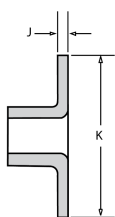
All dimensions in mm

HUCKTAINER - Raised Collars



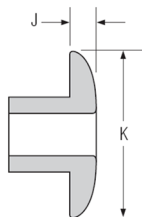
WIDE BEARING COLLAR

Collar Dimensions		Collar Part Number
K Max	J Max	
29.6	3.7	HLPS-R12



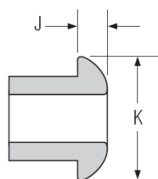
FLAT COLLAR

Collar Dimensions		Collar Part Number
K Max	J Max	
29.4	2.0	HLPS-R12XA



MEDIUM BEARING COLLAR

Collar Dimensions		Collar Part Number
K Max	J Max	
23.8	3.8	HLPSM-R12



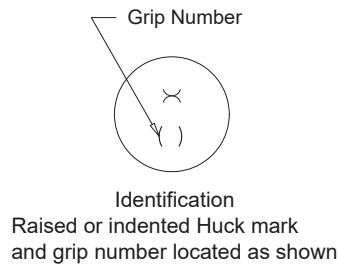
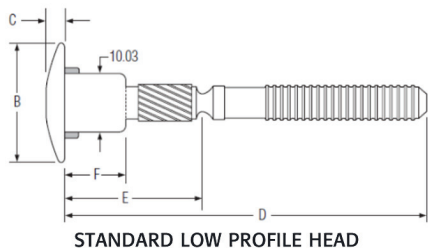
CLEARANCE COLLAR

Collar Dimensions		Collar Part Number
K Max	J Max	
16.1	3.7	HLPSC-R12

Installed Information and Max Hole Table / Caractéristiques mécaniques et diamètres de logement / Installationsinformation und Tabelle zu maximalen Lochgrößen

Nom. Diameter	Kn	Kn	Min & Max
	Typical Clamp	Typical Max. Grip Tensile	Typical Min. Grip Tensile
10.03	3.11 Kn	5.34 Kn	8.01 Kn
			10.3 -10.7



HUCKTAINER - Grip range with Countersunk Collar



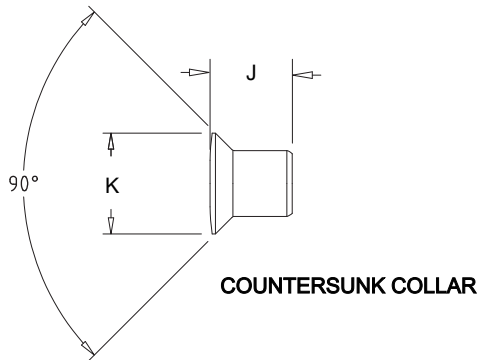
Head Dimensions	
B Max	C Max
21.2	3.4

English	Français	Deutsch
Standard low profile head - Steel	Profil plat standard - Acier	Standard niedriges Profil - Stahl
Collar - Wide bearing sleeve	Bague - Douille standard large	Bund - Breite Lagerhülse
Pin: Steel, Zinc Plated, Clear Passivated	Tige: Acier doux, Zingué, passivation transparente	Stift: Niedrig gekohlter Stahl, Zinkblech, blankes passivieren
Collar: Steel, Zinc Plated, Clear Passivated	Bague: Acier doux, Zingué, passivation transparente	Bund: Niedrig gekohlter Stahl, Zinkblech, blankes passivieren

Grip range when used with a countersunk collar




 Minimum Grip	 Maximum Grip	D Max	E Max	F Nom.	Pin Part Number
15.1	19.1	54.6	13.1	0.5	HLPPFS-R12-8
17.0	20.2	55.12	14.27	1.8	HLPPFS-R12-9
19.1	21.8	58.5	16.0	3.2	HLPPFS-R12-10
20.2	23.4	60.1	17.6	4.0	HLPPFS-R12-11
21.8	24.9	61.7	19.2	5.6	HLPPFS-R12-12
23.4	26.5	63.2	20.8	6.7	HLPPFS-R12-13
24.9	28.1	64.8	22.4	8.8	HLPPFS-R12-14
26.5	29.7	66.4	24.0	10.4	HLPPFS-R12-15
28.1	31.3	68.0	25.5	11.9	HLPPFS-R12-16
29.7	32.9	69.6	27.1	13.5	HLPPFS-R12-17
31.3	34.5	71.2	28.7	15.1	HLPPFS-R12-18
32.9	36.0	72.8	30.3	16.7	HLPPFS-R12-19
34.5	37.6	74.4	31.9	18.3	HLPPFS-R12-20
36.0	39.2	75.9	33.5	19.9	HLPPFS-R12-21
37.6	40.8	77.5	35.1	19.9	HLPPFS-R12-22
39.2	42.4	79.1	36.7	19.9	HLPPFS-R12-23
40.8	44.0	80.7	38.2	19.9	HLPPFS-R12-24
42.4	45.6	82.3	39.8	19.9	HLPPLS-R12-25
44.0	47.2	83.9	41.4	19.9	HLPPLS-R12-26
45.6	48.8	85.5	43	19.9	HLPPLS-R12-27
47.2	50.3	87.1	44.6	19.9	HLPPLS-R12-28
48.8	51.9	88.6	46.2	19.9	HLPPLS-R12-29
50.3	53.5	90.2	47.8	19.9	HLPPLS-R12-30

HUCKTAINER - Countersunk Collar



Collar Dimensions		Collar Part Number
K Max	J Max	
16.0	13.8	HLPS90-R12G

Installed Information and Max Hole Table / Caractéristiques mécaniques et diamètres de logement / Installationsinformation und Tabelle zu maximalen Lochgrößen

Nom. Diameter	 Kn	 Kn	 Min & Max
10.03	Typical Clamp 3.11 Kn	Typical Max. Grip Tensile 5.34 Kn	Typical Min. Grip Tensile 8.01 Kn
			10.3 -10.7

The product information contained in this publication is only for general guidance with regard to properties of the products shown and/or the means for selecting such products, and is not intended to create any warranty, express, implied, or statutory; all warranties are contained only in Star Fasteners (UK) Ltd written quotations, acknowledgments, and/or purchase orders. It is recommended that the user secure specific, up-to-date data and information regarding each application and/or use of such products.

Die in dieser Publikation enthaltenen Informationen dienen nur zur allgemeinen Orientierung über die Eigenschaften der gezeigten Produkte und/oder als Hilfsmittel für die Auswahl dieser Produkte und sind nicht dazu geeignet daraus irgendwelche ausdrücklichen, stillschweigenden oder gesetzlich festgelegten Gewährleistungsansprüche abzuleiten. Jegliche Gewährleistungsansprüche ergeben sich ausschließlich aus den schriftlichen Angeboten, Auftragsbestätigungen und/oder Einkaufsaufträgen von Star Fasteners (UK) Ltd. Wir empfehlen dem Benutzer sich genau definierte, tagesaktuelle Daten und Informationen zu jeder Anwendung und/oder dem Gebrauch der betreffenden Produkte einzuholen.

Les informations produits contenues dans cette publication ne sont données qu'à titre d'indication générale en ce qui concerne les propriétés des produits illustrés et/ou le moyen de sélectionner ces produits. Elles ne constituent aucune garantie explicite, implicite ou légale ; toutes les garanties sont contenues exclusivement dans les devis écrits, les récépissés et/ou les bons de commande d'Star Fasteners (UK) Ltd Il est recommandé à l'utilisateur de se procurer des données et des informations spécifiques et mises à jour concernant chaque application et/ou chaque utilisation desdits produits.

All dimensions in mm