

By accepting this proprietary Huck drawing, recipient agrees not to reproduce or disclose any part thereof to any others without the written permission of the Huck Manufacturing Company.

REV	DESCRIPTION	DATE
H	ADDED NOTE: 1.	10/31/00

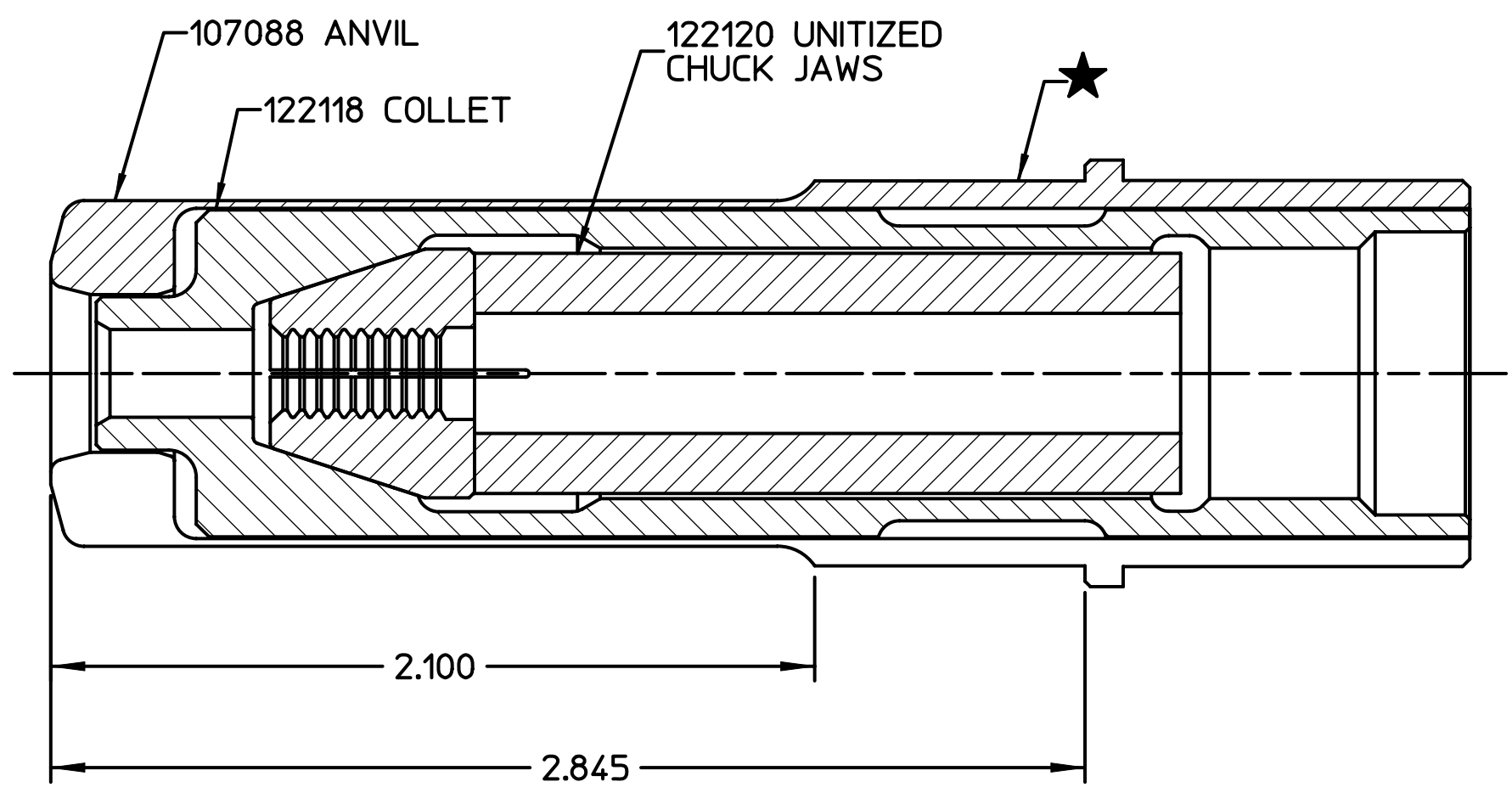
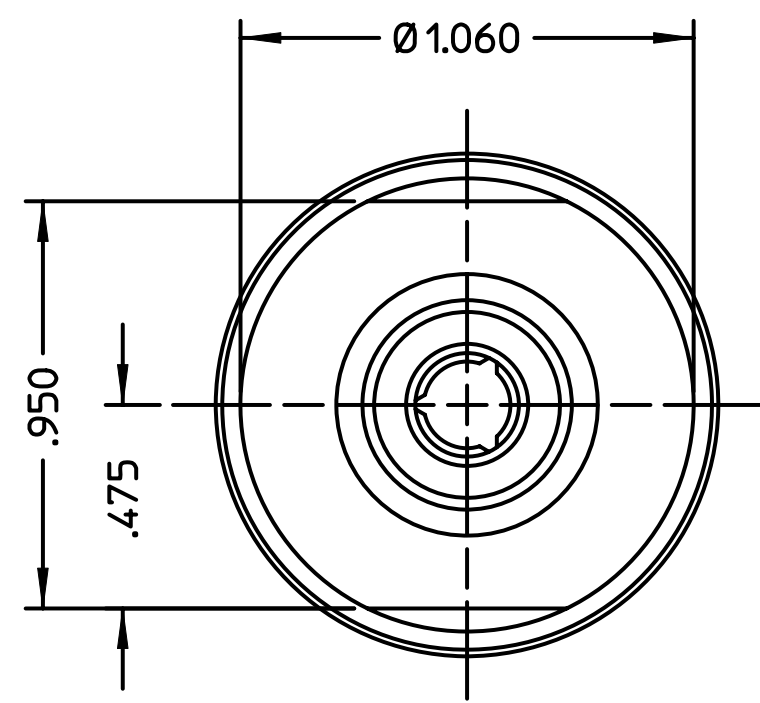
NOTE:

Ⓜ 1. THE FOLLOWING STEEL DFLECTORS ARE  
OPTIONALLY AVAILABLE:

FOR USE WITH 246 TOOL, USE 123634-246.

FOR USE WITH 2502/2503 TOOL USE 123634-2503.

FOR USE WITH 2580 TOOL USE 123634-2580.



MATERIAL:	-	SPEC: -	TOLERANCES UNLESS OTHERWISE SPECIFIED		HUCK MANUFACTURING COMPANY I.E.D. 85 GRAND STREET, P.O. BOX 2270 KINGSTON, NEW YORK 12401			
HARDNESS:	-				NOSE ASSEMBLY -10 BOM			
HEAT TREAT:	-	SPEC: -	.XX, .XXX ±					
SURF. TREAT:	-	SPEC: -	INT. COR. RADII		DET: T.L.	CK: -	DATE: 7-16-91	SCALE: 2/1
SURFACE FINISH NOT TO EXCEED			Ra	BREAK EDGES				
IDENTIFICATION PER SPEC 42-311: ★ CHEMICAL ETCH			ANGLES ±		FOC.			
SURFACES TO BE ☉, //, ⌀, ⊥, & ▽ WITHIN			T.I.R.	FINAL ASSY: -	FAC.			
						B	99-769	