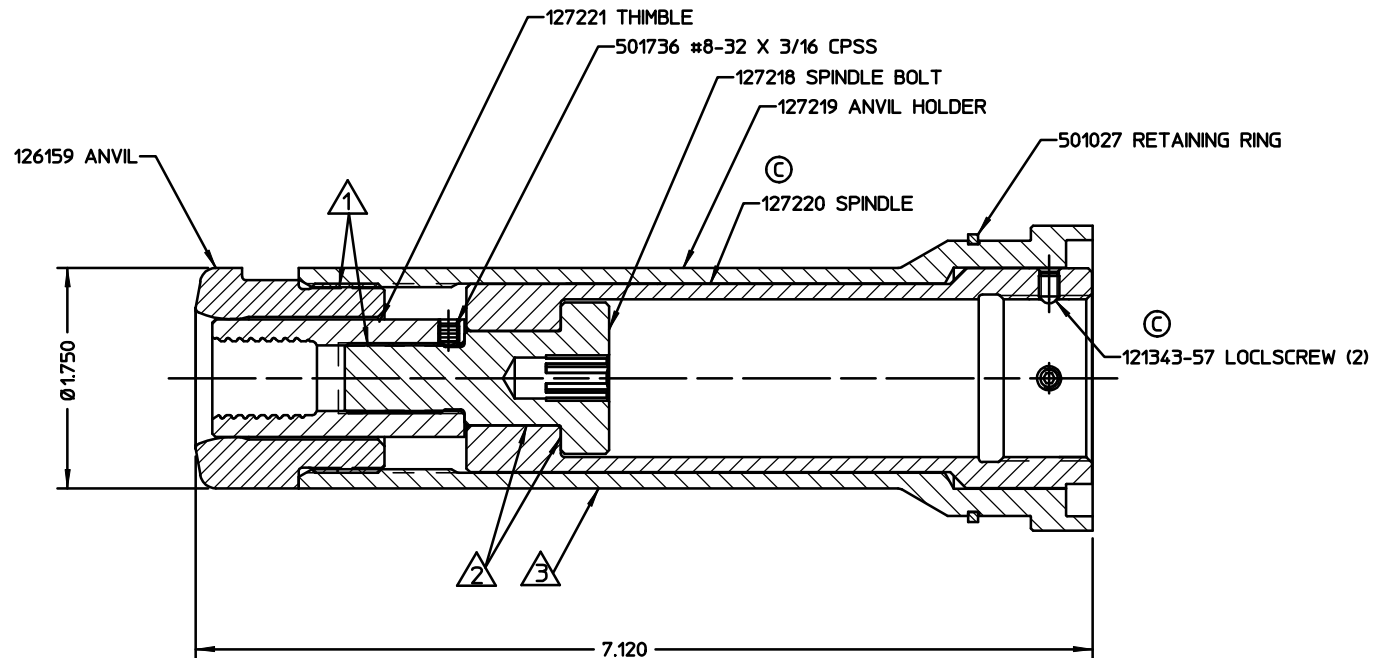


NOTES:

- ① APPLY LOCTITE 242 P/N 505016 TO THESE THREADED JOINTS.
- ② APPLY GREASE P/N 620030 TO SPINDLE BEFORE ASSEMBLY TO SPINDLE BOLT.
- ③ APPLY WARNING STICKER P/N 590273 TO ANVIL HOLDER. DO NOT PERMIT STICKER TO OVERLAP ONTO ANVIL.

REV	DESCRIPTION	DATE
A	RELEASE	2/12/03
B	127221 WAS 127213	3/12/03
C	127220 SPINDLE WAS 127223 SPINDLE ASSEMBLY ADDED 121343-57 LOCKSCREW	05/24/04



FORM KE104 REV C		By accepting this proprietary Huck drawing, recipient agrees not to reproduce or disclose any part thereof to any others without the written permission of Huck International, Inc.			
MATERIAL:	-	SPEC:	TOLERANCES UNLESS OTHERWISE SPECIFIED: (ALL DIMENSIONS ARE IN INCHES)		HUCK INTERNATIONAL, INC., I.S.D. 1 CORPORATE DRIVE, P.O. BOX 2270 KINGSTON, NEW YORK 12401
HARDNESS:	-	RAW OR STOCKED STATE	.XX, .XXX ±	.01, .005	
HEAT TREAT TO:	-	SPEC:	INT. COR. RADII	.005-.015	NOSE ASSY, INSTALLATION HSCF-R20 & MHSCF-R16 HUCKSPIN COLLARS
SURFACE TREAT:	-	SPEC:	BREAK EDGES	.005-.015	
SURFACE FINISH NOT TO EXCEED: 125 Ra			ANGLES ±	3°	DET: CHR CK: DATE: 05/24/04 SCALE: FULL
IDENTIFICATION PER SPEC 42-311: ★ PERMANENT			FINAL ASSY:		FOC. B 99-7501
SURFACES TO BE ○, //, ⚙, ⊥, & ☐ WITHIN .005 T.I.R.					FAC.