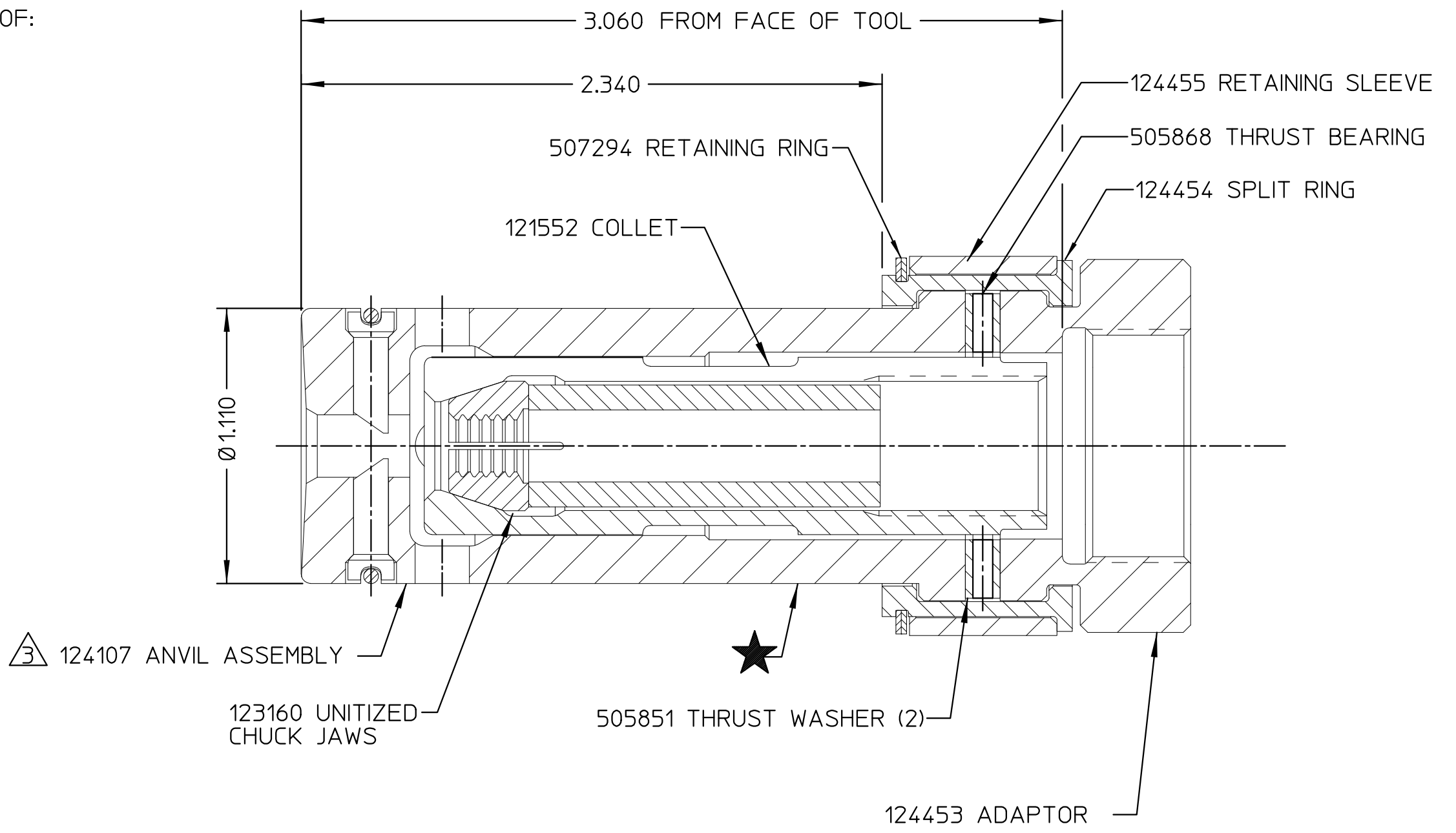
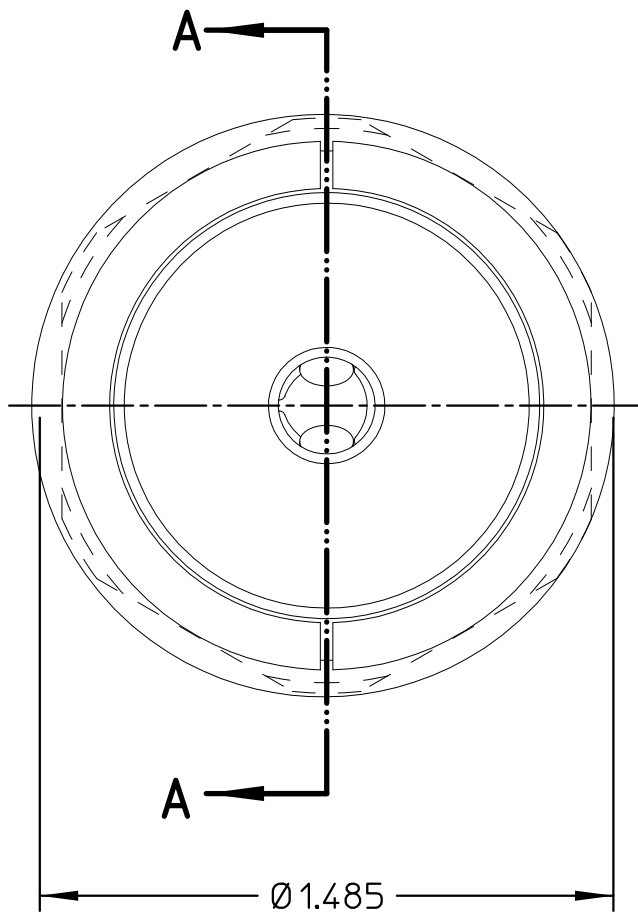


REV	DESCRIPTION	DATE
A	RELEASE	04/01/13

NOTES:

- 1 WHEN USED WITH 210 OR 212 TOOLS, USE WITH SHIM P/N 89140 (SHIPPED IN SEPARATE BAG).
- 2 TORQUE ALL THREADED JOINTS TO 28-32 FT/LBS

△ ANVIL ASSEMBLY 124107 CONSISTS OF:  
 124106 ANVIL  
 124105 RATCHET PIN (2)  
 507166 O-RING



SECTION A-A

FORM: KE104 REV C		By accepting this proprietary Huck drawing, recipient agrees not to reproduce or disclose any part thereof to any others without the written permission of Huck International, Inc.		HUCK INTERNATIONAL, INC., I.S.D. 85 GRAND STREET, P.O. BOX 2270 KINGSTON, NEW YORK 12401	
MATERIAL:	-	SPEC:	TOLERANCES UNLESS OTHERWISE SPECIFIED: (ALL DIMENSIONS ARE IN INCHES)	NOSE ASSEMBLY -12 LP	
HARDNESS:	-	(RAW OR STOCKED STATE)	.XX, .XXX ±		
HEAT TREAT TO:	-	SPEC:	INT. COR. RADII	DET: JJC CK: DATE: 04/01/13 SCALE: 2/1	
SURFACE TREAT:	-	SPEC:	BREAK EDGES		
SURFACE FINISH NOT TO EXCEED: Ra			ANGLES ±	FAC. FAC. <b>B</b> 99-3464L	
IDENTIFICATION PER SPEC 42-311: ★ ETCH			FINAL ASSY: 212		
SURFACES TO BE ☉, //, ⊕, ⊥, & ▱ WITHIN T.I.R.					