

REV	DESCRIPTION	DATE
F	127828 ANVIL INSERT WAS 124197 ANVIL INSERT	05/20/05

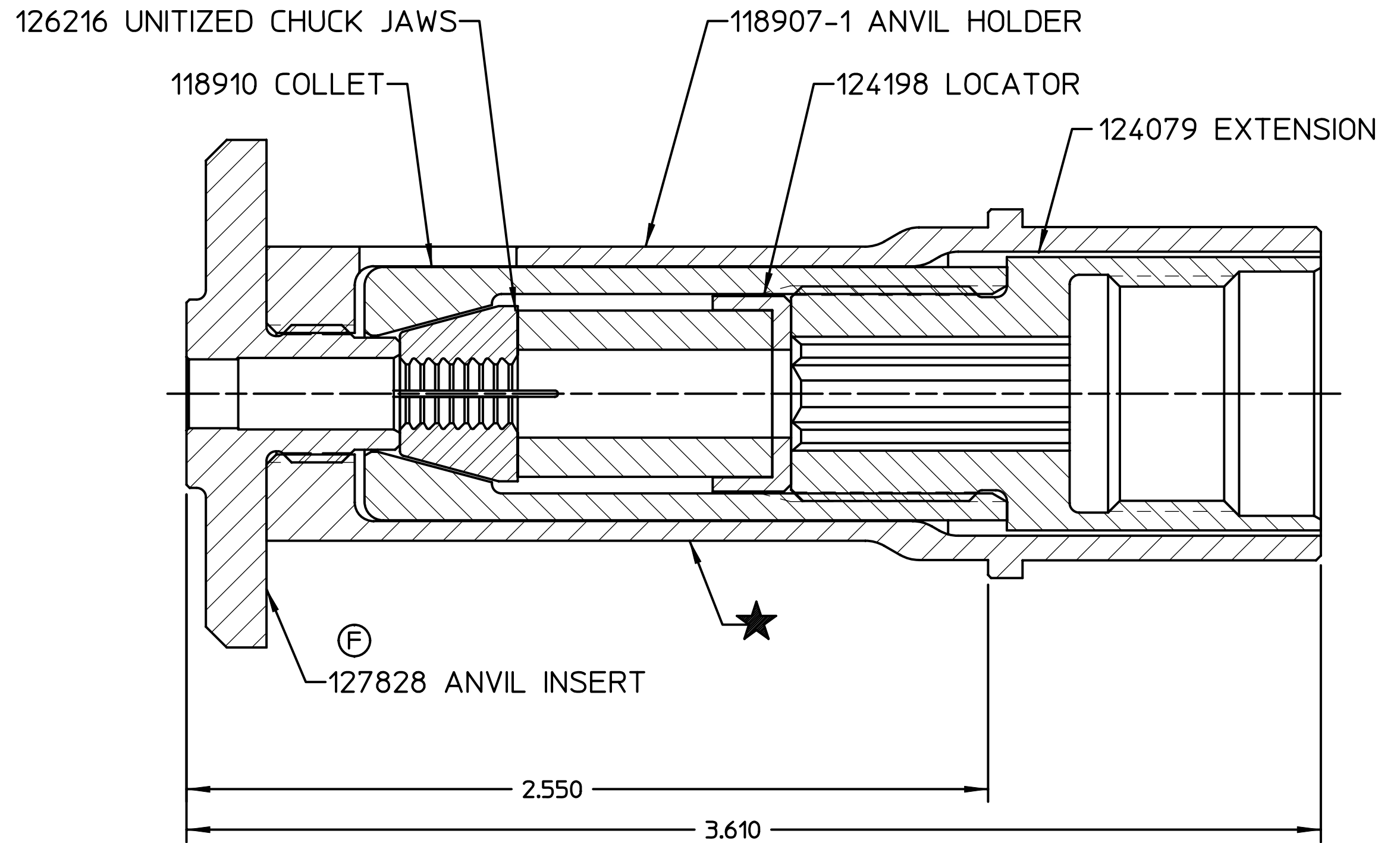
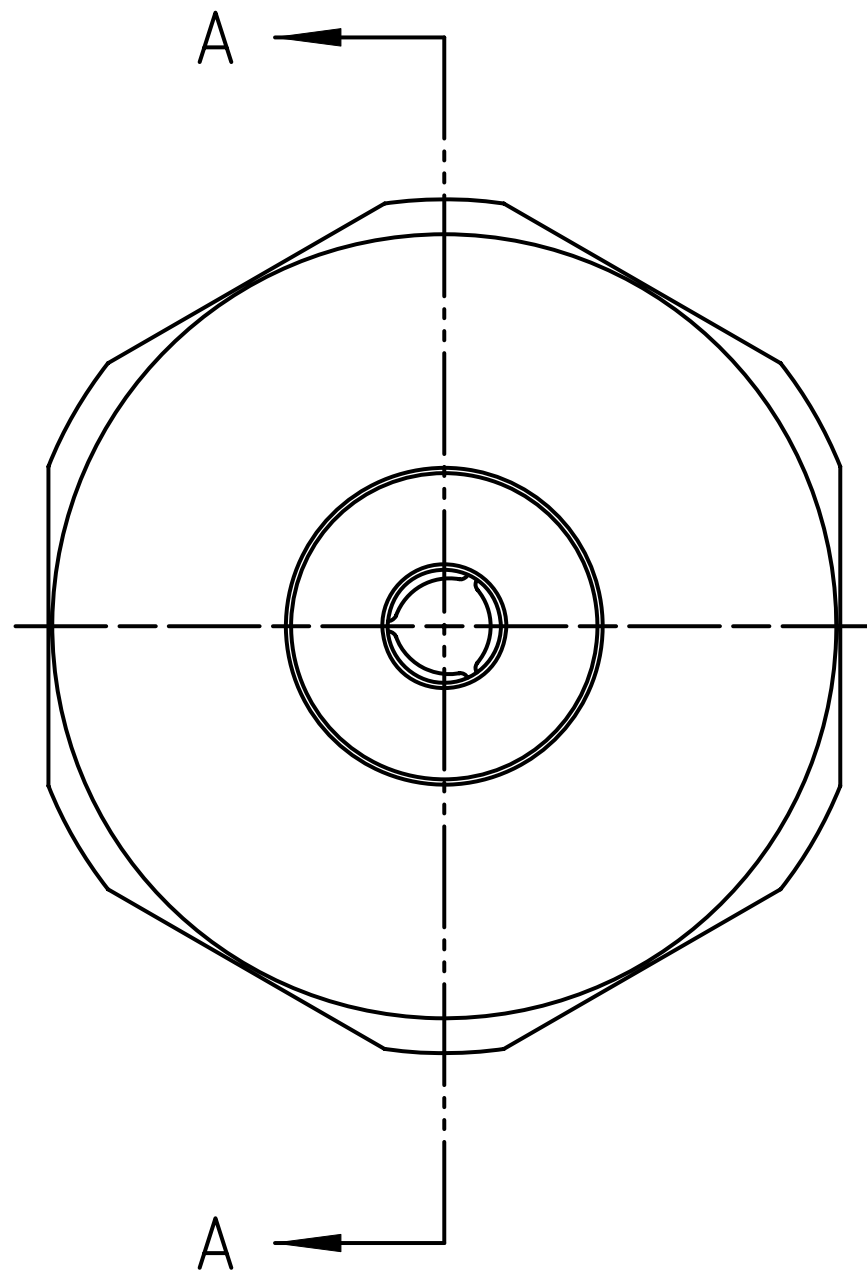
NOTE:

1. THE FOLLOWING STEEL DFLECTORS ARE
OPTIONALLY AVAILABLE:

FOR USE WITH 246 TOOL, USE 123634-246.

FOR USE WITH 2502/2503 TOOL USE 123634-2503.

FOR USE WITH 2580 TOOL USE 123634-2580.



SECTION A-A

HUCK INTERNATIONAL, INC., I.S.D. 1 CORPORATE DRIVE, P.O. BOX 2270 KINGSTON, NEW YORK 12401			
NOSE ASSEMBLY -10 FLOOR FASTENER			
DET: CHR.	CK:	DATE: 05/20/05	SCALE: 2/1
FOC.	B	99-3452	
FAC.			