

REV	DESCRIPTION	DATE
B	MODELED IN UG	08/17/06

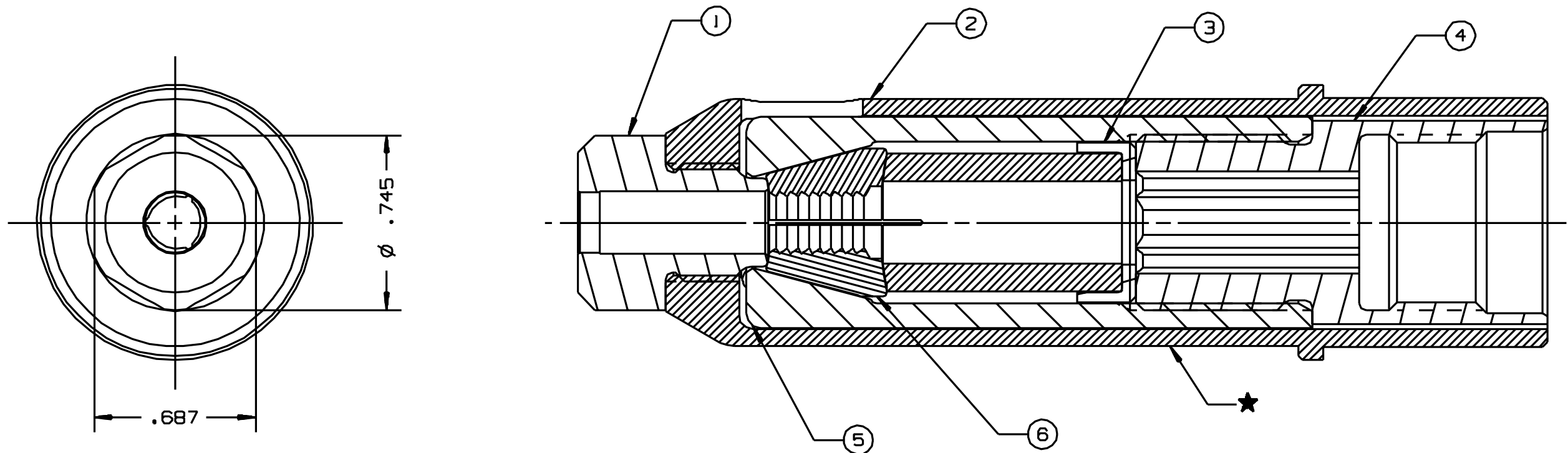
NOTES:

1 THE FOLLOWING STEEL DEFLECTORS ARE
OPTIONALLY AVAILABLE:

FOR USE WITH 246 TOOL, USE 123634-246.

FOR USE WITH 2502/2503 TOOL USE 123634-2503.

FOR USE WITH 2580 TOOL USE 123634-2580.



128029	1	UNITIZED CHUCK JAWS	6
118953	1	COLLET	5
123881	1	COLLET EXTENSION	4
124198-1	1	LOCATOR	3
118952	1	ANVIL HOLDER	2
118954-1	1	ANVIL INSERT	1
PART NO.	QTY.	DESCRIPTION	ITEM

HUCK INTERNATIONAL, INC., I.S.D.
1 CORPORATE DR, P.O. BOX 2270
KINGSTON, NEW YORK 12401

NOSE ASSEMBLY
-12 MGL NON S.R.

DES: JLK DR: DATE: 12/14/05 SCALE: 2:1

FOC. FAC. B 99-3329