

NOTES:

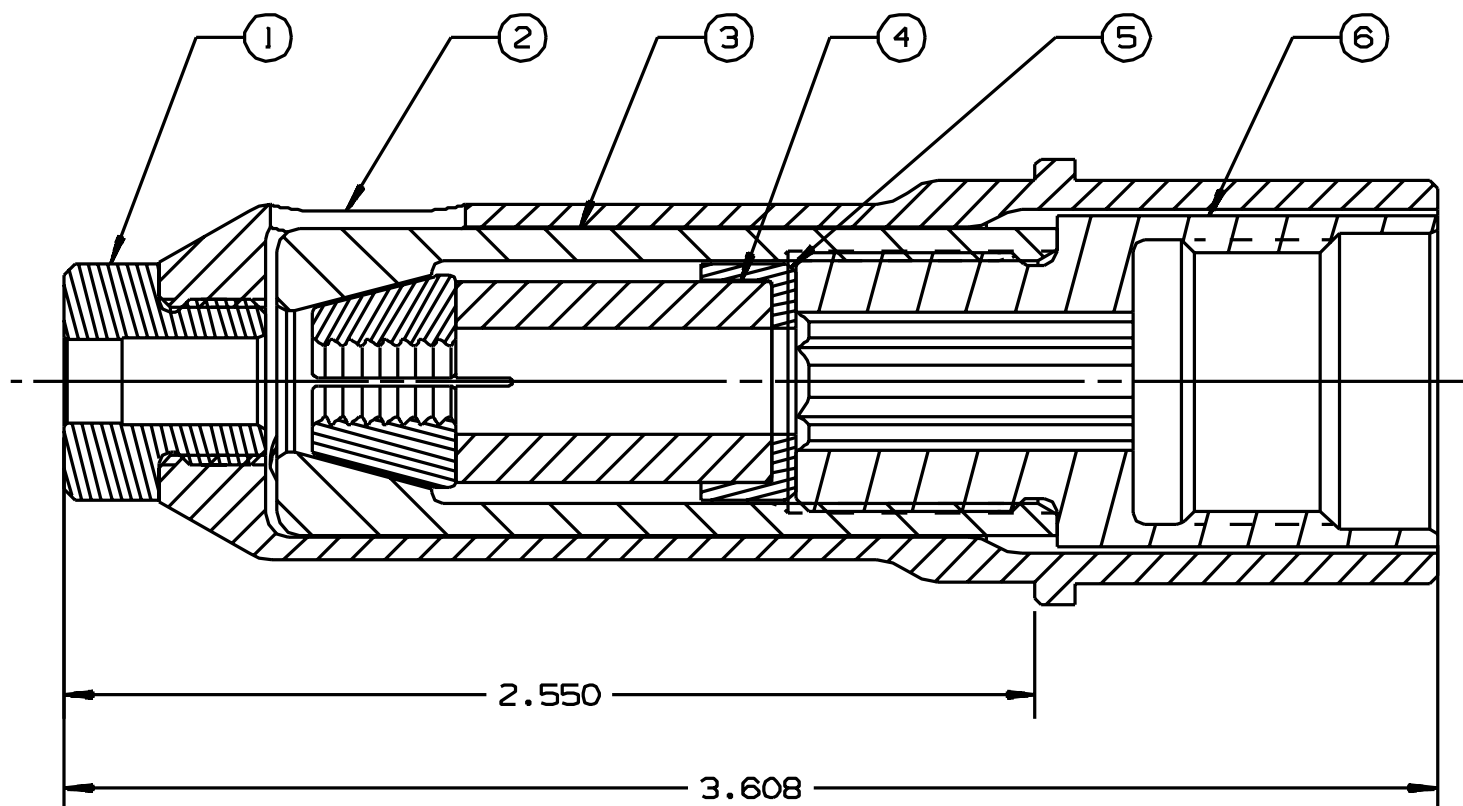
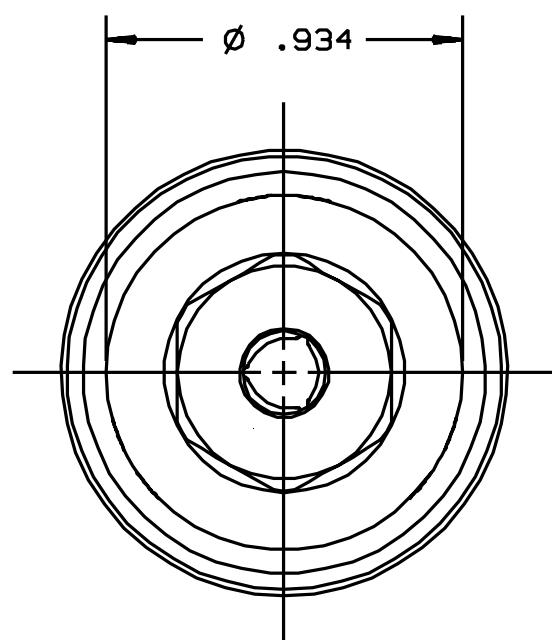
1 THE FOLLOWING STEEL DEFLECTORS ARE
OPTIONALLY AVAILABLE:

FOR USE WITH 246 TOOL, USE 123634-246.

FOR USE WITH 2502/2503 TOOL USE 123634-2503.

FOR USE WITH 2580 TOOL USE 123634-2580.

REV	DESCRIPTION	DATE
E	MODELED IN UG	08/17/06



124079	1	EXTENSION	6
124198	1	LOCATOR	5
125635	1	UNITIZED CHUCK JAWS	4
118910	1	COLLET	3
118907	1	ANVIL HOLDER	2
124266	1	ANVIL INSERT	1
PART NO.	QTY.	DESCRIPTION	ITEM

HUCK INTERNATIONAL, INC., I.S.D. 1 CORPORATE DR., P.O. BOX 2270 KINGSTON, NEW YORK 12401			
NOSE ASSEMBLY -10 MBULB			
DES: JLK	CR:	DATE: 07/11/03	SCALE: 2:1
FOC. FAC.	B	99-3307	