

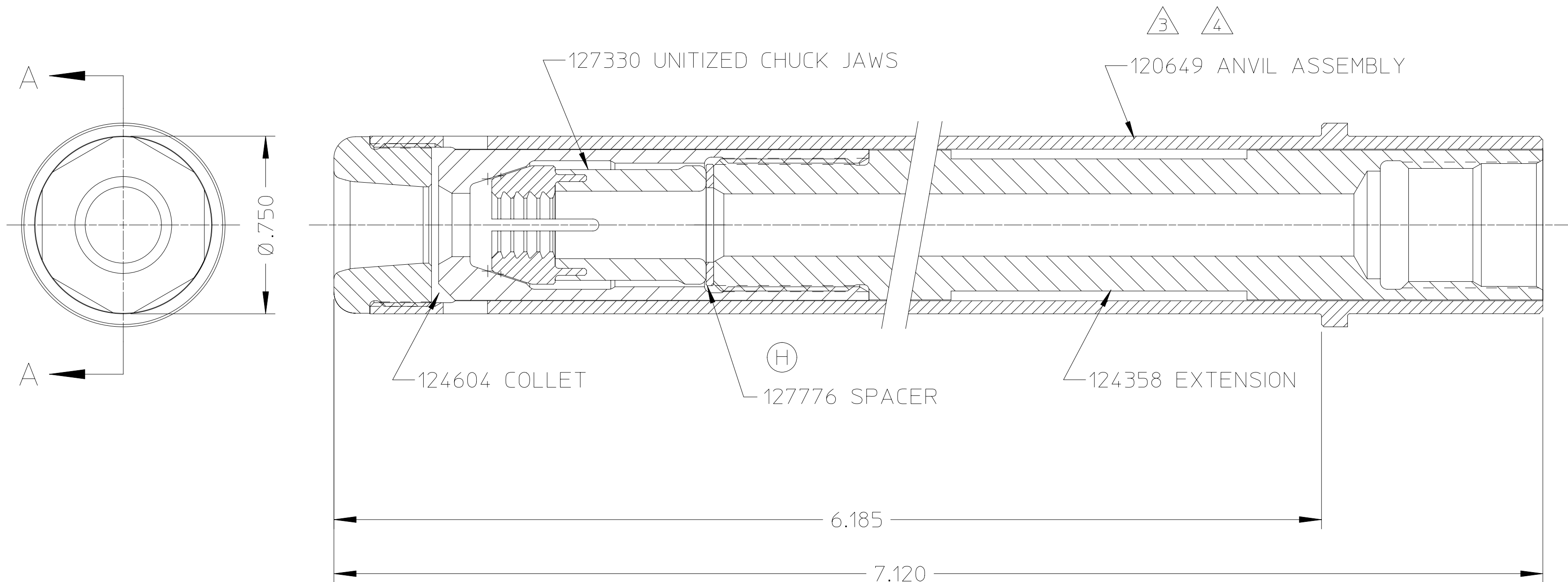
NOTES:

1. SHIP WITH O-RING P/N 500778
2. BEFORE ATTACHING NOSE ASSEM TO TOOL, INSTALL SUPPLIED O-RING ON TO THREAD RELIEF OF PULL PISTON

3. ANVIL ASSY 120649 CONSISTS OF:
 (1) 120637 ANVIL HOLDER AND
 (1) 120625 ANVIL INSERT
 BOTH ARE AVAILABLE INDIVIDUALLY.

4. ANVIL INSERT WRENCH 125400 IS
 OPTIONALLY AVAILABLE.

REV	DESCRIPTION	DATE
H	ADDED 127776 SPACER	05/05/05



SECTION A-A

HUCK INTERNATIONAL, INC., I.S.D. 1 CORPORATE DRIVE, P.O. BOX 2270 KINGSTON, NEW YORK 12401			
NOSE ASSEMBLY -08 MG			
DET: CHR	CK:	DATE: 05/05/05	SCALE: 2/1
FOC.	B	99-3205	
FAC.			