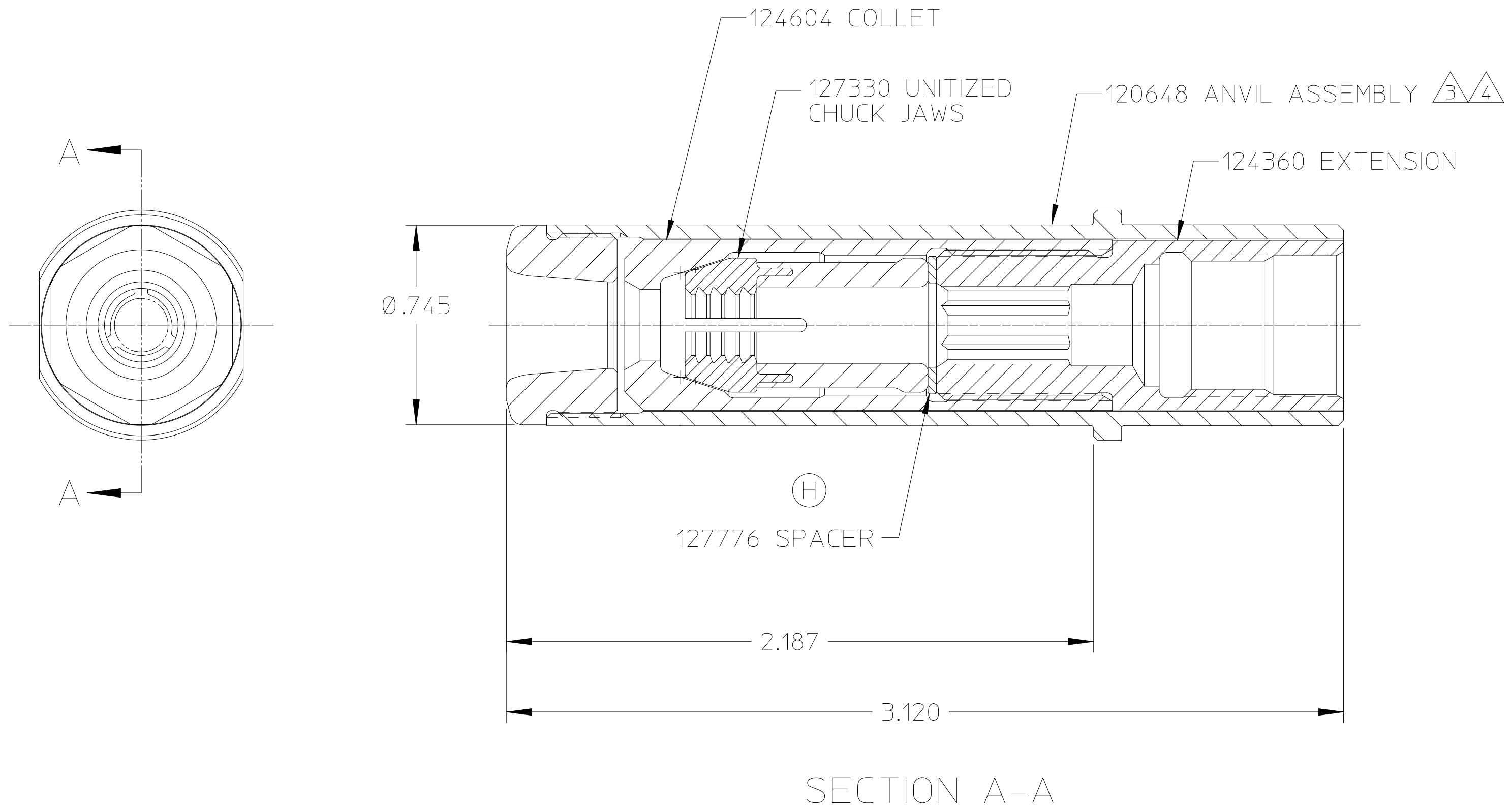


REV	DESCRIPTION	DATE
H	ADDED 127776 SPACER	05/05/05

NOTES:

- 1 SHIP WITH O-RING P/N 500778
2. BEFORE ATTACHING NOSE ASSEMBLY TO TOOL, INSTALL SUPPLIED O-RING ON TO THREAD RELIEF OF PULL PISTON
3. ANVIL ASSEMBLY 120648 CONSISTS OF:
120636 ANVIL HOLDER AND
120625 ANVIL INSERT
BOTH ARE AVAILABLE INDIVIDUALLY.
4. ANVIL INSERT WRENCH 125400 IS OPTIONALLY AVAILABLE.



SECTION A-A

HUCK INTERNATIONAL, INC., I.S.D. 1 CORPORATE DRIVE, KINGSTON, NEW YORK 12401			
NOSE ASSEMBLY -08 MG			
DET: CHR	CK:	DATE: 05/05/05	SCALE: 2/1
FOC.	B	99-3204	
FAC.			