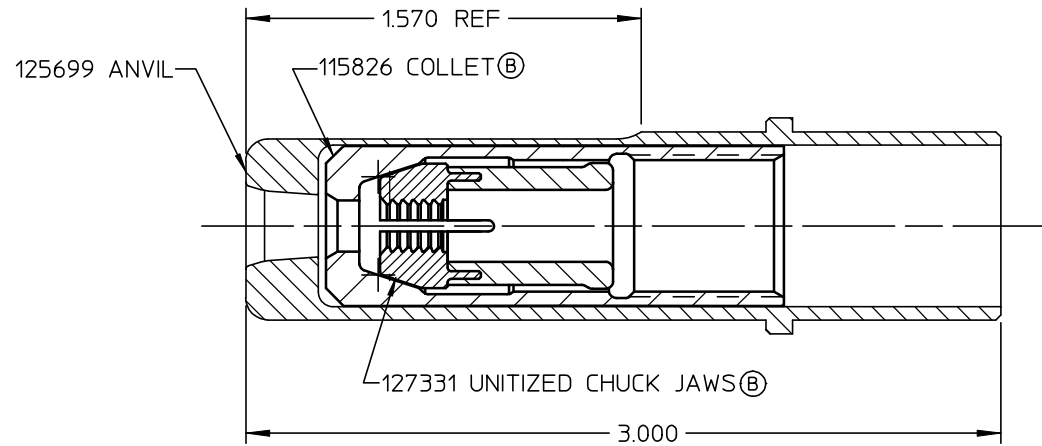
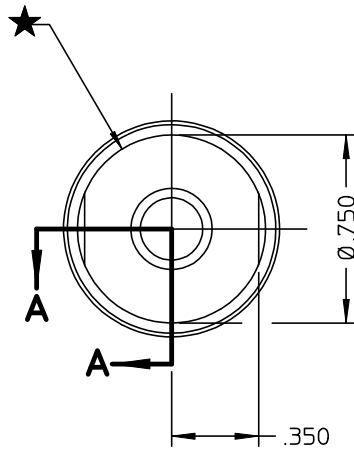


REV	DESCRIPTION	DATE
A	RELEASE	03/26/02
B	127331 JAW WAS 126001 JAW PICTORALLY UPDATED 115826 COLLET	09/05/03

NOTES:

- 1 SHIP WITH O-RING P/N 500778.
- 2 BEFORE ATTACHING NOSE ASSEMBLY TO TOOL, INSTALL SUPPLIED O-RING ON TO THREAD RELIEF OF PULL PISTON.



SECTION A-A

IDENTIFICATION PER SPEC 42-311: ★ ETCH			
HUCK INTERNATIONAL, INC., I.S.D. 1 CORPORATE DRIVE, P.O. BOX 2270 KINGSTON, NEW YORK 12401			
NOSE ASSEMBLY -06 MG			
DET: WV	CK: -	DATE: 03/26/02	SCALE: 2/1
FOC.	B	99-1456L	
FAC.			